

# SONAR<sup>®</sup> BOOKENDS<sup>®</sup> InXref

CROSS-REFERENCE GENERATOR  
FOR ADOBE<sup>®</sup> InDesign<sup>™</sup>

## **User's Guide 21.x** **Macintosh and Windows**



Copyright © 2001-2024

Virginia Systems All

Rights Reserved

## **COPYRIGHT**

Copyright © 2001-2024 by Virginia Systems. All rights reserved. No part of this publication may be reproduced, transmitted, transcribed, stored in a retrieval system, or translated into any language or computer language, in any form or by any means, electronic, mechanical, magnetic, optical, chemical, manual, or otherwise, without the prior written permission of Virginia Systems, 5509 West Bay Court, Midlothian, VA 23112

## **DISCLAIMER**

Virginia Systems makes no representation or warranties with respect to the contents hereof and specifically disclaims any implied warranties of merchantability or fitness for any particular purpose. Further, Virginia Systems reserves the right to revise this publication and to make changes from time to time in the content hereof without obligation of Virginia Systems to notify any person of such revision or changes.

## **TRADEMARKS**

Sonar Bookends InDex is a trademark of Virginia Systems

Adobe and InDesign are trademarks of Adobe Incorporated

Apple, the Apple logo, Macintosh and the Macintosh logo are trademarks of Apple Computer, Inc.

Windows and MS Word are trademarks of the Microsoft® Corporation.

All other trademarks acknowledged.

# Table of Contents

|  |    |
|--|----|
| Section I Introduction .....                 | 1  |
| Installing Sonar Bookends InXref.....        | 3  |
| Activating Sonar Bookends InXref.....        | 3  |
| Technical Support .....                      | 3  |
| Section II Creating Reference Labels .....   | 5  |
| Section III Creating Destination Labels..... | 7  |
| Section IV Editing/Removing Labels .....     | 9  |
| Section V Updating Page Numbers.....         | 13 |
| Section VI Importing Cross-References .....  | 17 |
| Reference Text Markup Format .....           | 17 |
| Destination Text Markup Format.....          | 17 |
| Section VII Error Messages .....             | 19 |



# Section I Introduction

Sonar Bookends® InXref™ is a cross-reference generator for Adobe InDesign™ that allows you to quickly and easily imbed the page numbers for tables, figures, chapters, appendices or any other items anywhere in the text of one or more files or one or more InDesign “books.”

Without Sonar Bookends InXref, doing cross-references is very time-consuming. And, unless you take extreme care, references can end up with outdated page numbers whenever a document is changed.

Sonar Bookends InXref uses a “labeling” system to make creating and updating cross-references a snap. The power of the labeling systems is that you can create cross-references to items that do not exist yet. This allows you to easily put cross-references into a document *as it is being written*.

For example, you can enter a reference to “Photo 6” before the page containing “Photo 6” has been created. Or you can setup “Photo 6” as a destination before there are any references to “Photo 6” in the document.

Two cross-referenced page numbers and associated text shown in bold:

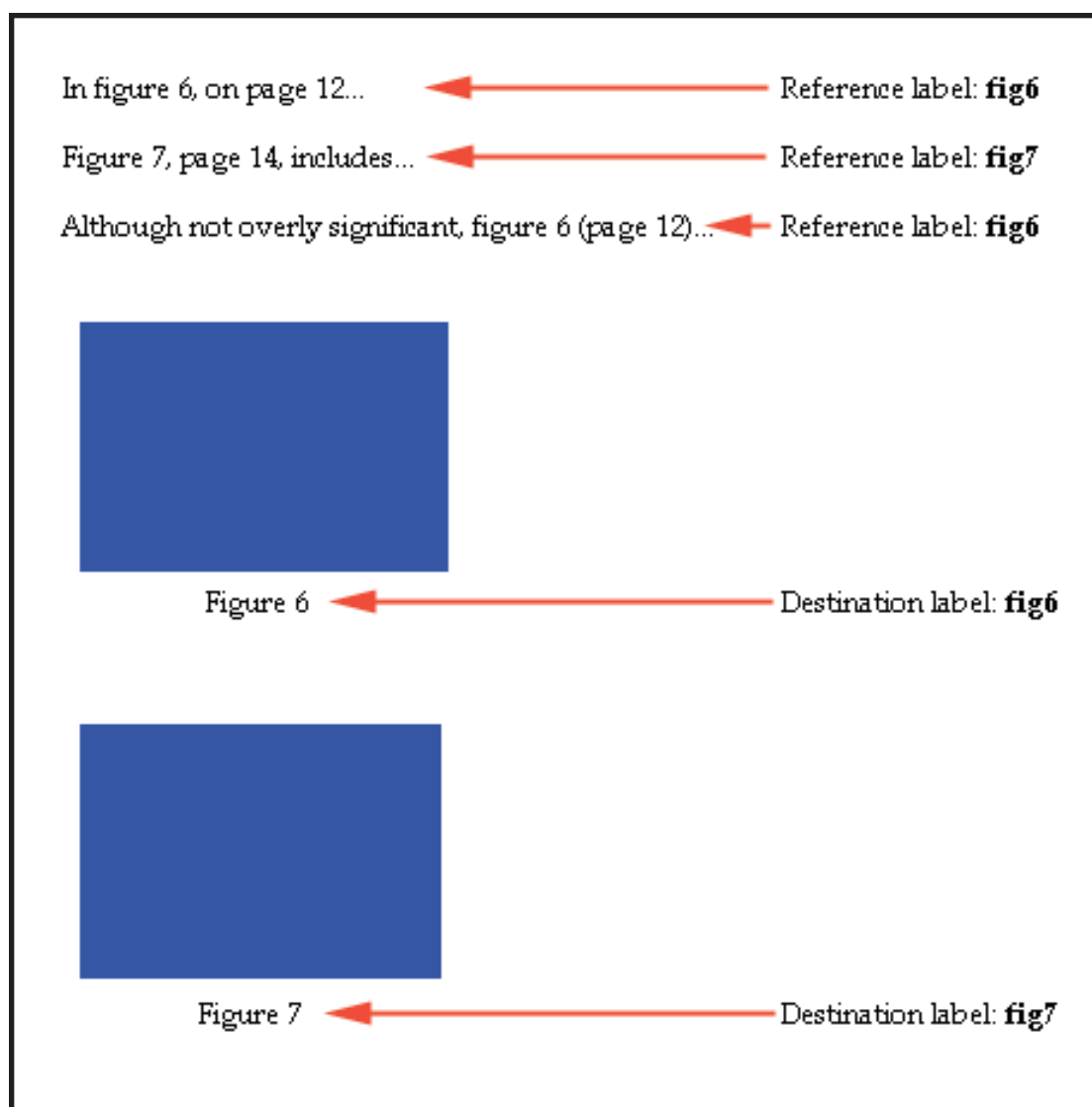
“Photo 6 **on page 24** shows a widget in use. For more on widgets, see Appendix A **on page 122.**”

In the above example, Sonar Bookends InXref would find the page numbers for “Photo 6” and “Appendix A” (*destinations*) and plug them into the text automatically (*references*). If a reference and a destination are on the same page, an alternate text can be substituted for the page number. If the document is changed, with the click of a mouse all of the page references can be updated to reflect the correct page number for each destination item in seconds.

To create cross-references you simply enter “reference” labels where you want the page numbers for cross-referenced items to be placed and “destination” labels that mark items being cross-referenced.

Only when you tell Sonar Bookends InXref to update the cross-referenced page numbers does it check for matching reference and destination labels. Each reference label must have a single matching destination label. However, a destination label can have many matching reference labels.

Figure 1.1 on page 2 shows the relationship between reference and destination labels.



*Fig. 1.1*

The document being cross-referenced can consist of one file or many files and the page numbers can include chapter names as an option:

“See table 6, on page 2-18.

References and destinations can also be encoded as text in a document and imported by Sonar Bookends InXref version 7.5 and later. This allows a non-InDesign application to create a file for import into InDesign which has imbedded cross-reference markers.

## Installing Sonar Bookends InXref

To install the Sonar Bookends InXref plug-in, see the **ReadMe** file in the Sonar Bookends InXref folder.

## Activating Sonar Bookends InXref

When first installed, Sonar Bookends InXref runs in demonstration mode. Demonstration mode allows you to create an unlimited number of cross-reference links, but only the first five references are filled-in.

To remove the restriction on the number of cross-references that are generated, you must purchase Sonar Bookends InXref. After payment is received, you are given a special serial number to enter into the registration dialog box, fully and instantly enabling Sonar Bookends InXref's features.

To purchase Sonar Bookends InXref, contact Virginia Systems at:

Email: [sales@virginiasytems.com](mailto:sales@virginiasytems.com)

## Technical Support

Technical support is only provided to registered customers. You can purchase a Technical Support and Software Update Agreement to receive updates and technical support following the first 30 days after initial purchase of this product.

Along with any questions, please include your:

- Name
- Serial number
- Telephone number
- Email address

Contact Virginia Systems' technical support at:

Email: [support@virginiasytems.com](mailto:support@virginiasytems.com)





## Section II      Creating Reference Labels

Reference labels tell Sonar Bookends InXref where to put the page numbers for cross-referenced items.

To create a reference label, put the cursor where the page number is to be placed and select *Create Reference...* as shown in figure 2.1.

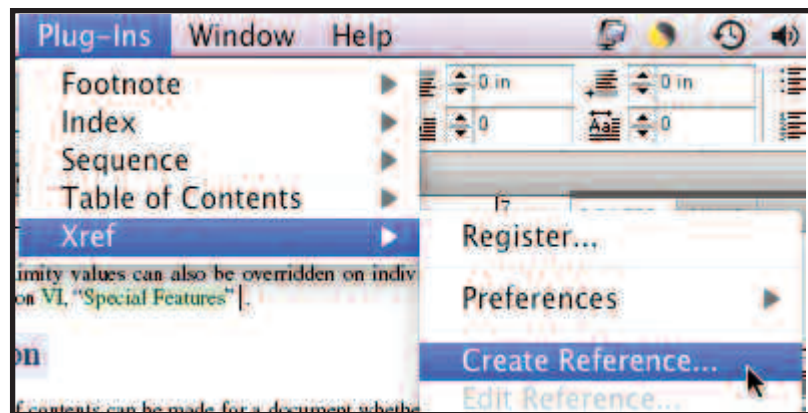


Fig. 2.1

The dialog box in figure 2.2 will then appear to let you either select a label name from a list or manually enter the name of a label. A matching label marks, or will mark, the desired destination. The label can be anything you want, as long as it matches the destination label exactly in both characters and case ("Table 1" and "table 1" would not match). **The label list consists of all labels that are currently defined in the document.**

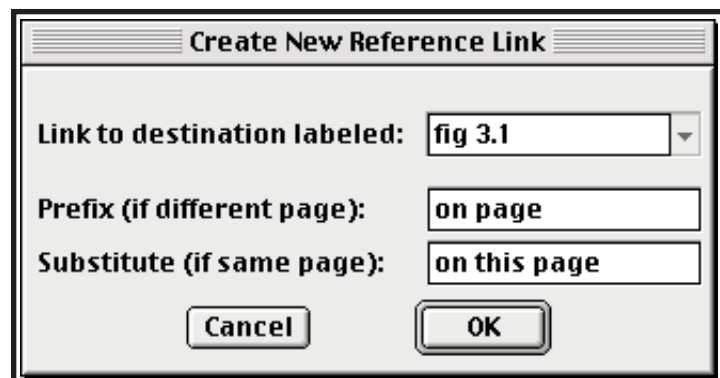


Fig. 2.2

Notice that you can enter a prefix text to go in front of the page number (“on page “) and a substitute text if the reference and destination are on the same page (“on this page”).

A page number with prefix text looks like this: *See figure 6 on page 22*.  
Same entry with substitute text: *See figure 6 on this page*.

After clicking *OK*, the prefix text and three question marks are inserted where the actual page number will eventually go as a visual placeholder. See figure 2.3.

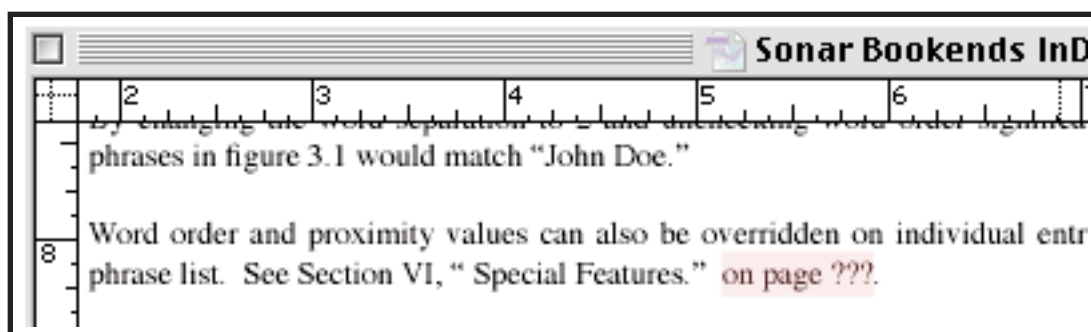


Fig. 2.3

Note that reference place holders are colored to make them stand out. Destinations are also colored, but with a different color to help differentiate the two. The color will not appear on a printed version of the document. When the page number for the destination is inserted later, the page number will also be marked with the same color. The highlight coloring on the screen can be turned off by unchecking *Highlight* in the *Preferences* menu as shown in figure 2.4.

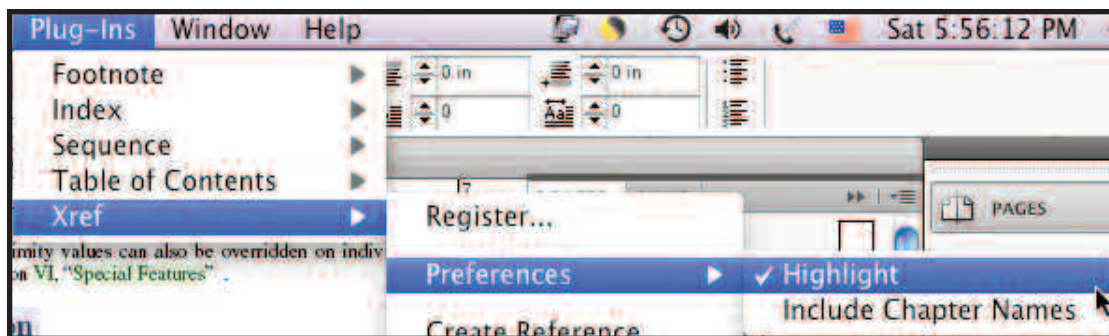


Fig. 2.4

If turned off, the highlighting will come back on automatically when the next reference or destination label is created.

## Section III      Creating Destination Labels

Destination labels mark items that are being cross-referenced. A destination item consists of a string of text in the document. The page number of the page where the destination text begins is the page number that is put in all references to that item.

To create a destination label, select the desired destination text and then select *Create Destination...* as shown in figure 3.1.

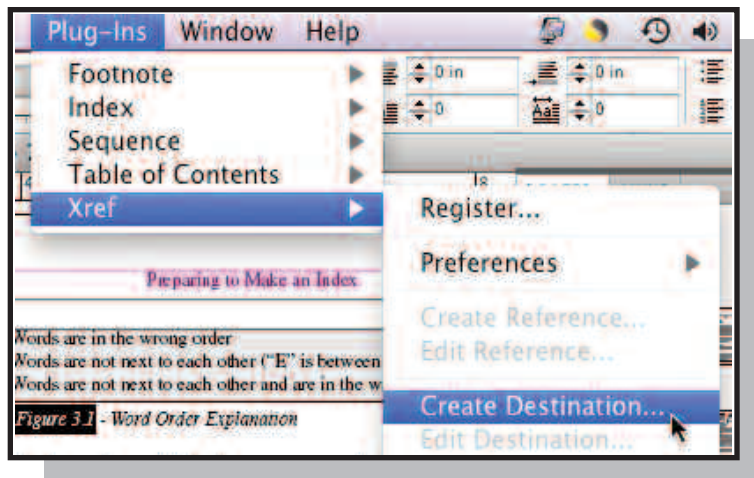


Fig. 3.1

The dialog box in figure 3.2 will then appear to let you either select a label name from a list or manually enter the name of a label for the destination. The label can be anything you want, as long as it matches the associated reference label exactly in both characters and case ("Table 1" and "table 1" would not match). **The label list consists of all labels that are currently defined in the document, but not yet marking a destination - duplicate destination labels are not allowed.**

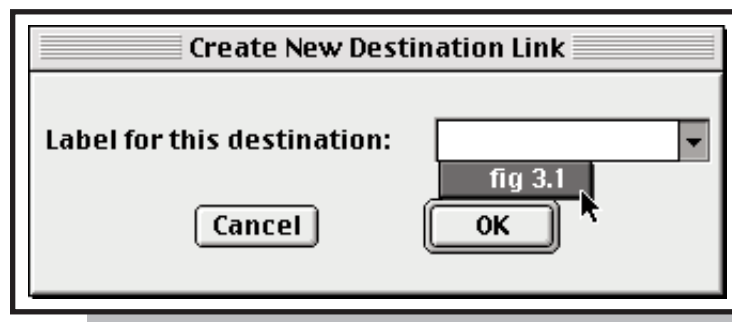


Fig. 3.2

After clicking *OK*, the selected text is highlighted as shown in figure 3.3 to show that it is a destination.

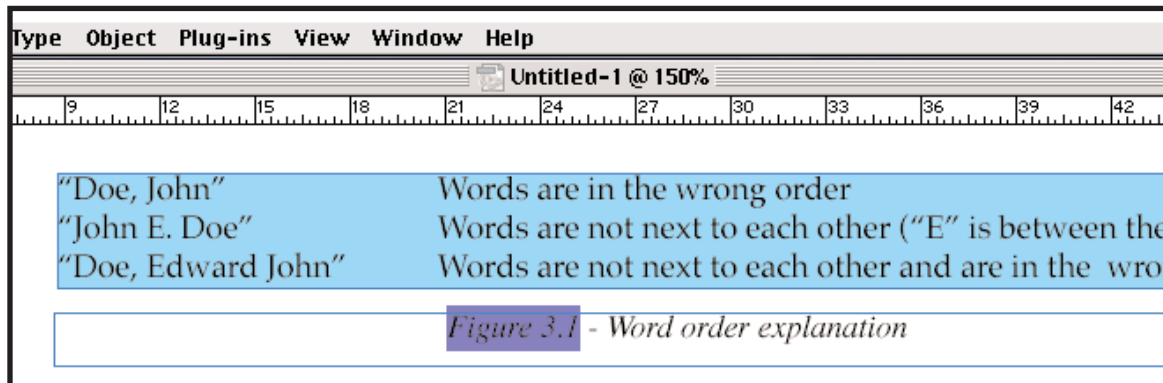


Fig. 3.3

It doesn't matter how much text is selected for the destination. The selection is used only to visually display and hopefully describe each destination for the person writing the document.

The color that is used to mark each destination will not appear on a printed version of the document. The highlight coloring on the screen can be turned off by unchecking *Highlight* in the *Preferences* menu as shown in figure 3.4.

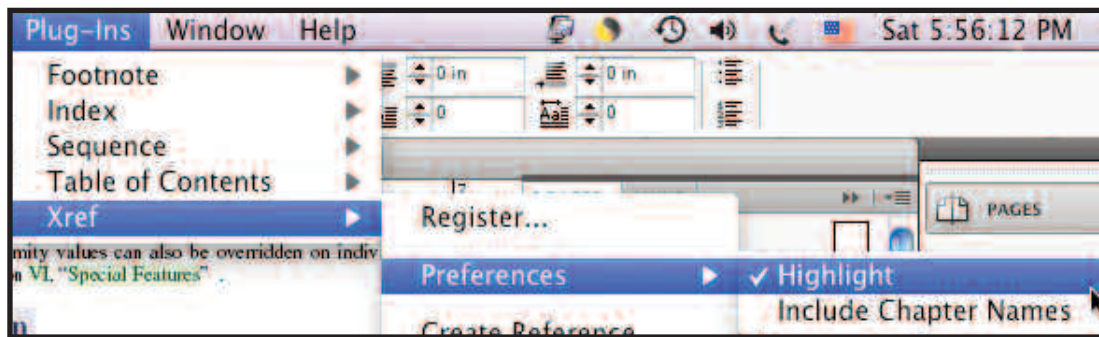


Fig. 3.4

If turned off, the highlighting will come back on automatically when the next reference or destination label is created.

## Section IV      Editing/Removing Labels

Existing reference and destination labels can be easily edited or deleted.

To edit or delete a reference label, select the desired reference. The reference can be either the prefix text and “???” or a page number, depending on whether the reference is new or has already been resolved, respectively. Then use *Edit Reference...* as shown in figure 4.1.

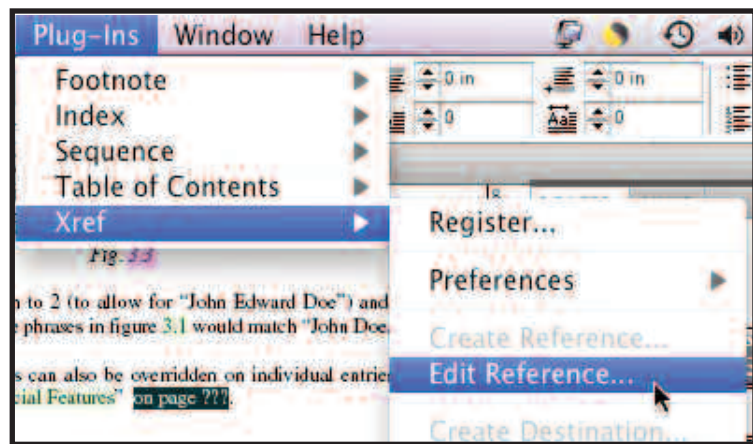


Fig. 4.1

The dialog box in figure 4.2 will then appear to let you edit the label for the selected reference. To delete the reference instead of changing the label, you can optionally check *Delete this entry*. When a reference is deleted, that reference is completely removed from the document. Figure 4.3 shows the document after the reference has been deleted.

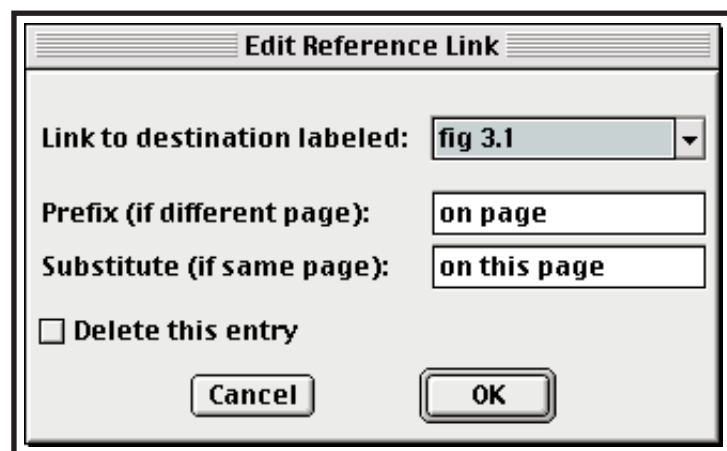


Fig. 4.2

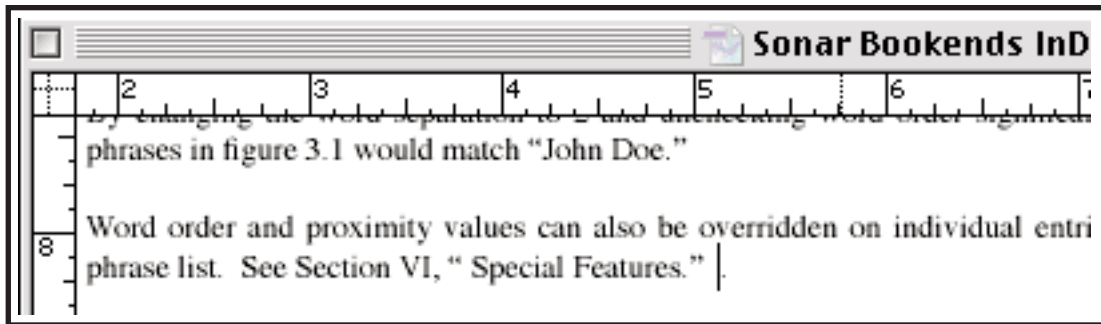


Fig. 4.3

To edit or delete a destination label, select the desired destination and then use *Edit Destination Label...* as shown in figure 4.4.

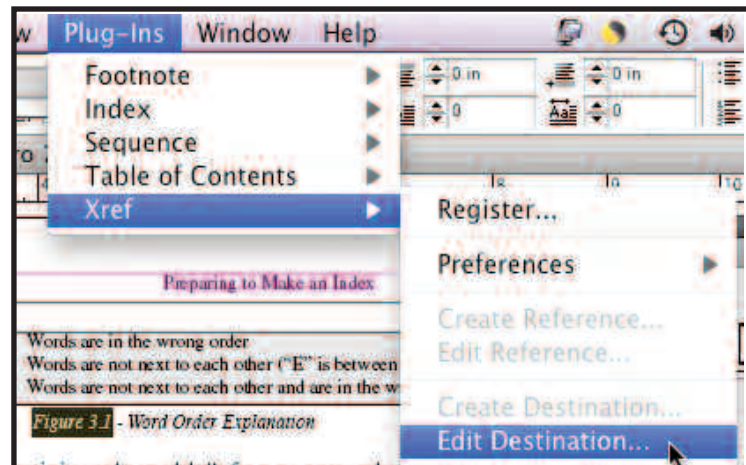
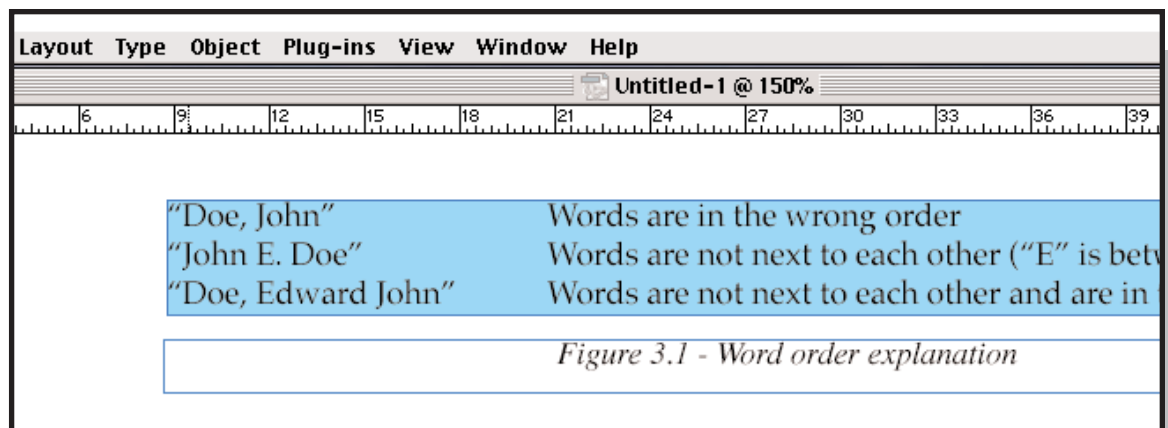


Fig. 4.4

The dialog box in figure 4.5 will then appear to let you edit the label for the selected destination. To delete the destination instead of changing the label, you can optionally check *Delete this entry*. When a destination is deleted, the highlighting is removed but the text is left. Figure 4.6 shows the document after the destination has been deleted.



*Fig. 4.5*



*Fig. 4.6*





## Section V Updating Page Numbers

Once all reference and destination labels have been entered or anytime the document has been changed, open all files that make up the document and then select *Update Page Numbers* as shown in figure 5.1. The destination page numbers and any prefix text are then placed in the document as shown in figure 5.2. If a reference and destination are on the same page, a substitute text is used instead. Refer to figure 5.3.

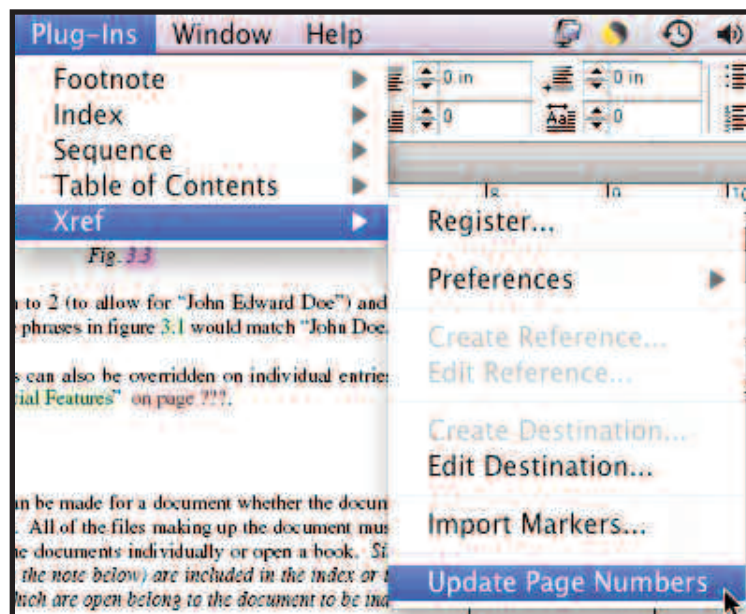


Fig. 5.1

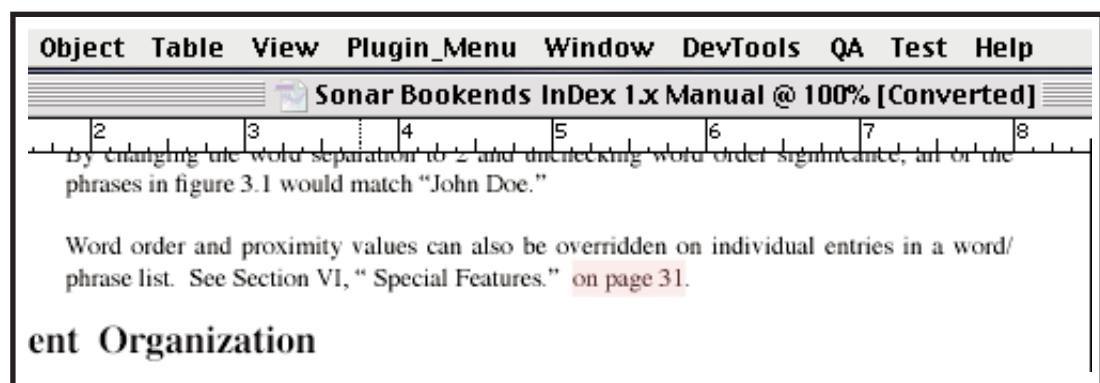


Fig. 5.2

The InDesign “book” feature is now supported by Sonar Bookends InXref. If your document consists of one or more books, you can update the cross-references by just opening the book or books and issuing the *Update Page Numbers* command. You do not need to open each of the individual files that make up the book or books.

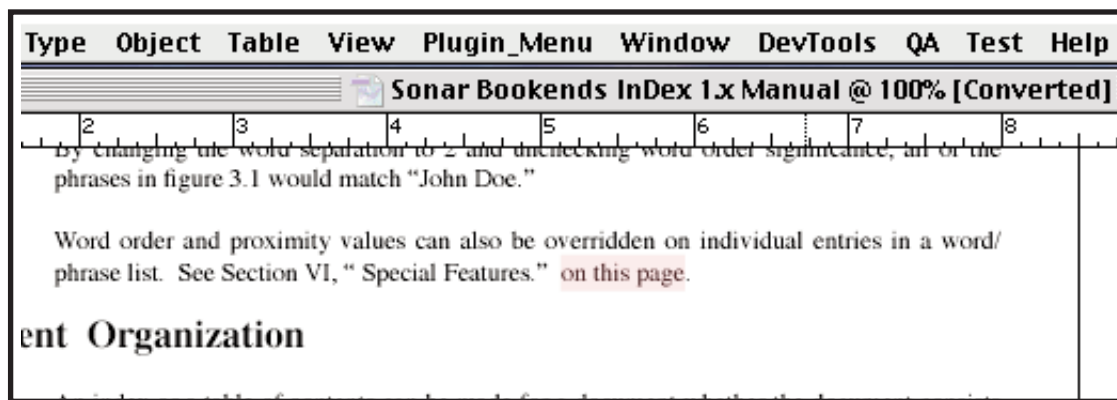


Fig. 5.3

Notice that the page numbers, prefix text, and any substitute text remains highlighted in the reference color.

If you want chapter names along with the page numbers, then each chapter in your document should have an **InDesign Section Marker**. The section marker should contain the desired page number prefix, such as “1-”, or “Boating-”, etc. as shown in figure 5.4.

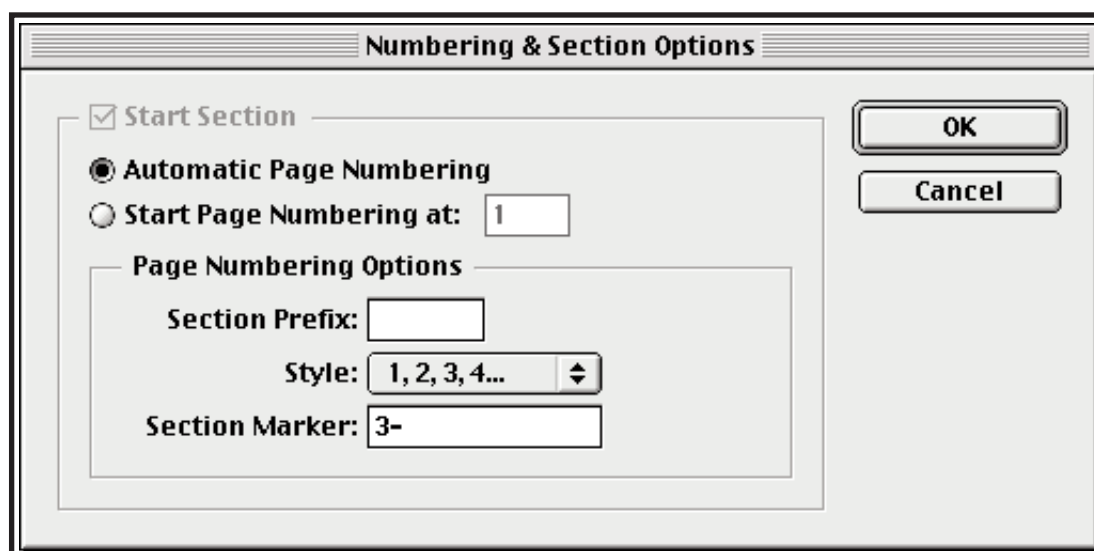


Fig. 5.4

You should also make sure that *Include Chapter Names* in the *Preferences* menu is checked as shown in figure 5.5.

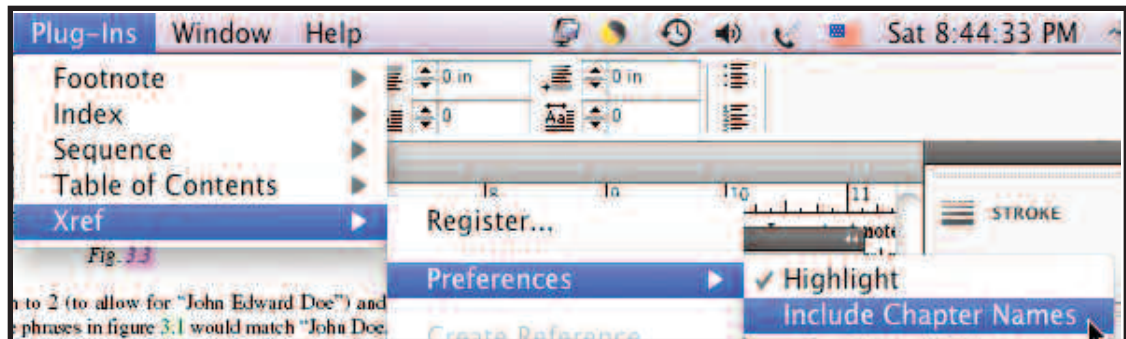


Fig. 5.5

Select *Update Page Numbers* again and the page numbers are now prefixed with the chapter name as shown in figure 5.6.

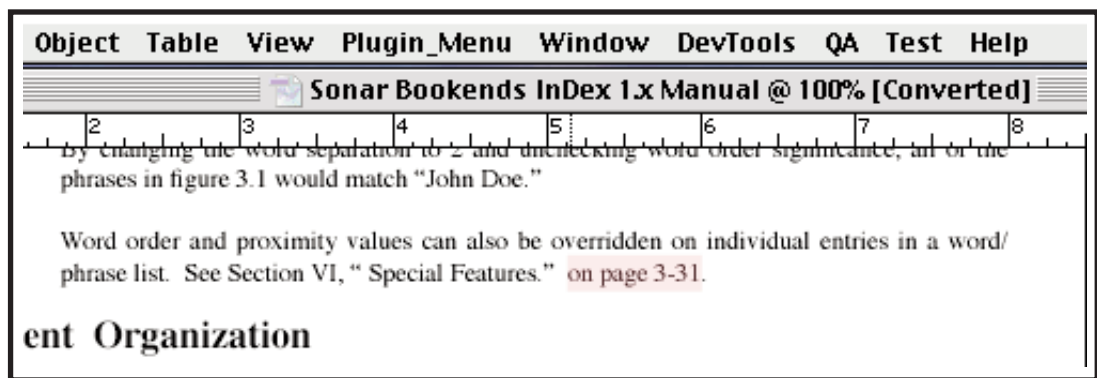


Fig. 5.6



## Section VI Importing Cross-References

Cross-reference references and destinations can be defined in a textual markup format, called *markers*, and then imported. Thus, text created outside of InDesign can have cross-reference information imbedded in the text.

Once imported, the reference and destination markers are converted to normal Sonar Bookends InXref references and destinations.

### Reference Text Markup Format

A reference marker is defined in the Sonar Bookends InXref markup format as follows:

<<ref:label>>

“label” is the label that you want to assign to this reference. If you wanted to assign the label, **Figure 16** to the reference, the marker would look like this:

<<ref:Figure 16>>

### Destination Text Markup Format

A destination marker is defined as a pair of markers in the Sonar Bookends InXref markup format as follows:

<<dest:label>> Text to be marked <</dest>>

“label” is the label that you want to assign to this destination. If you wanted to assign the label, **Figure 16**, to the destination text, **Velocity Values**, the marker pair would look like this:

<<dest:Figure 16>> Velocity Values <</dest>>

To import all the references in destinations in all open documents, use *Import Markers...* as shown in figure 6.1.

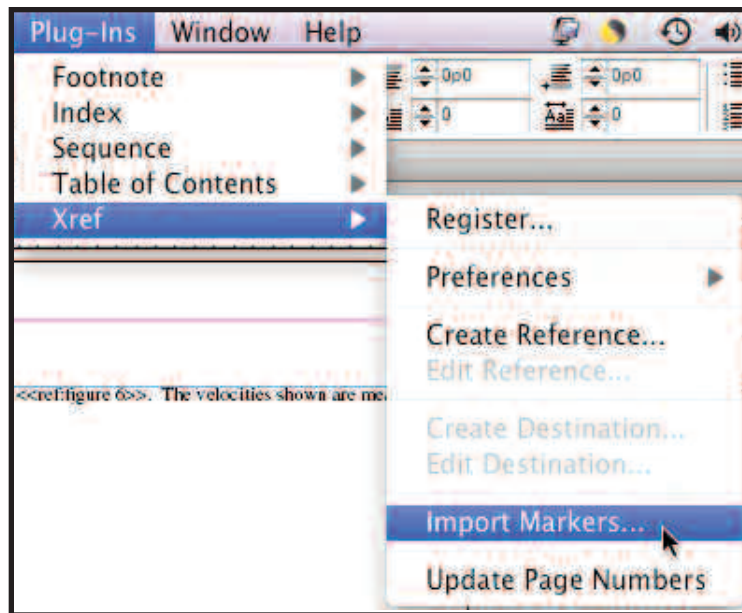


Fig. 6.1

Importing replaces the markers with normal Sonar Bookends InXref references and destinations as appropriate.

Once imported, the reference page numbers are filled in using the *Update Page Numbers* command.

## Section VII      Error Messages

There are a few error messages that can appear, depending on what operation is being performed.

- **Label cannot be empty** - When creating a label for a destination or a reference, there must be at least one character in the label field.
- **Duplicated destination label** - When updating the page numbers, two identical destination labels were found. Edit or remove the duplicate label to resolve this problem. Destination labels should be unique.
- **Destination label was not found** - When updating the page numbers, a matching destination label could not be found for a reference label. The “???” string is inserted for the missing page number. Either add/edit the offending destination label or edit/remove the offending reference label.
- **Demo version** - A reminder message that is displayed the first time that Sonar Bookends InXref is used after running InDesign, if you have not entered a valid serial number previously. Demo modes will only update the page numbers for the first five references. When you purchase Sonar Bookends InXref, you will get a valid serial number to enter into the *Register...* dialog box.
- **Mismatched <<dest>> <</dest>> pair** - A matching <</dest>> could not be found for a particular <<dest:label>>.
- **Invalid label** - A reference or destination was not properly terminated with >>.

For any other errors, please contact technical support.

